

Rotary Clubs

Cairo-Heliopolis - RC Oldenburg

Wulf Schmidt-Sacht, Grant Chair Distrikt 1850

Oktober 2015





Rotary projects in qaluob branch

**Qaliobia co. for water and
waste water**

مشروعات مياه الشرب ..1 water projects



Pipelines projects in some village



qaluib water treatment plant



اعمال الترويب والترسيب بالمروقات sedimentations



filtration in the sand filters



Alum.sulphate for sedimentation



CLEANING & STERILIZATION BY CHLORINE GAS



Final sterilization by chlorine gas in ground reservoirs.



The lab checks and examines the water samples constantly



Treated water pumps pumping the water through the main pipelines to the upper reservoirs.



Washing and sterilization constantly for upper reservoirs





Supporting the pipe line with pure water
from Qaluib water-treatment-plant
in Komashfeen, which takes its water
from the Nile river

Water cars for the needy areas



مشروعات الصرف الصحى

2. Waste water projects

Abwasser zwischen den Häusern



Starke Beteiligung von Internationalen Clubs und unseren beiden Partnerclubs

| # | Funding Method | Organization | Amount (USD) |
|----|--------------------------------|---------------------|--------------|
| 1 | Cash from club | Heliopolis | \$2,000.00 |
| 2 | District Designated Fund (DDF) | 2451 | \$2,000.00 |
| 3 | Cash from club | Oldenburg (Oldb.) | \$5,730.00 |
| 4 | District Designated Fund (DDF) | 1850 | \$5,730.00 |
| 5 | Cash from club | Soissons | \$2,000.00 |
| 6 | District Designated Fund (DDF) | 1670 | \$2,000.00 |
| 7 | Cash from club | Hoogezand-Sappemeer | \$2,000.00 |
| 8 | District Designated Fund (DDF) | 1590 | \$2,000.00 |
| 9 | Cash from club | Villa Park | \$2,000.00 |
| 10 | District Designated Fund (DDF) | 5320 | \$4,000.00 |

- Page 5 of 9 -

Budget 72.305 US\$

District Number 2451 (Qualified)

| | | | |
|----|--------------------------------|------------------------------------|------------|
| 11 | District Designated Fund (DDF) | 6060 | \$1,000.00 |
| 12 | Cash from club | Slidell | \$500.00 |
| 13 | District Designated Fund (DDF) | 6840 | \$2,500.00 |
| 14 | District Designated Fund (DDF) | 6820 | \$2,500.00 |
| 15 | Cash from club | Scafati-Angri-Realvalle Centenario | \$1,000.00 |
| 16 | Cash from club | Newport-Balboa | \$1,000.00 |
| 17 | Cash from club | Orange North | \$1,000.00 |
| 18 | Cash from club | Minneapolis | \$2,000.00 |

DDF contributions: 21730

Cash contributions: 19230

Other contributions: 3000

Endowed/Term gift contributions: 0

World Fund match maximum:: 31345

World Fund match (requested): 31345

Total financing: 72305

Total budget: 72305

Budget und beteiligte Clubs

Sanitation Kairo
Projekt 1 as per 18.9.2014

| | A | B | C | D | E |
|----|-------------------------|---------------|---------------|---------------|---------------|
| 1 | | Clubs | DDF | Worldfund | total |
| 2 | | \$ | \$ | \$ | \$ |
| 3 | RC Cairo D 2451 | 2.000 | 2.000 | 3.000 | 7.000 |
| 4 | RC Ol D 1850 | 2.730 | 2.730 | 4.095 | 9.555 |
| 5 | RC Ol Wulf | 1.500 | 1.500 | 2.250 | 5.250 |
| 6 | RC Ol Martin | 1.500 | 1.500 | 2.250 | 5.250 |
| 7 | RC Soisson D 1670 | 2.000 | 2.000 | 3.000 | 7.000 |
| 8 | RC Hoogezand D 1590 | 2.000 | 2.000 | 3.000 | 7.000 |
| 9 | RC Villa Park D 5320 | 2.000 | 2.000 | 3.000 | 7.000 |
| 10 | D 6060 | | 1.000 | 1.000 | 2.000 |
| 11 | Slidell D 6840 | 2.500 | | 1.250 | 3.750 |
| 12 | D 6840 | | 2.500 | 2.500 | 5.000 |
| 13 | D 6820 | | 2.500 | 2.500 | 5.000 |
| | Scafati-Angri Realvalle | | | | |
| 14 | Centario D 2100 | 1.000 | | 500 | 1.500 |
| 15 | New Balboa/D 5320 | 1.000 | 1.000 | 1.500 | 3.500 |
| 16 | Orange North/D 5320 | 1.000 | 1.000 | 1.500 | 3.500 |
| 17 | | 19.230 | 21.730 | 31.345 | 72.305 |

Supporting the pipe lines for abo nashaba in Qaluib



During the work خلال الاعمال



During the work خلال الاعمال



يتم انحدار المياه
لمحطات الرفع التي
لمحطة تضخها
معالجة قليبوب
بشركس

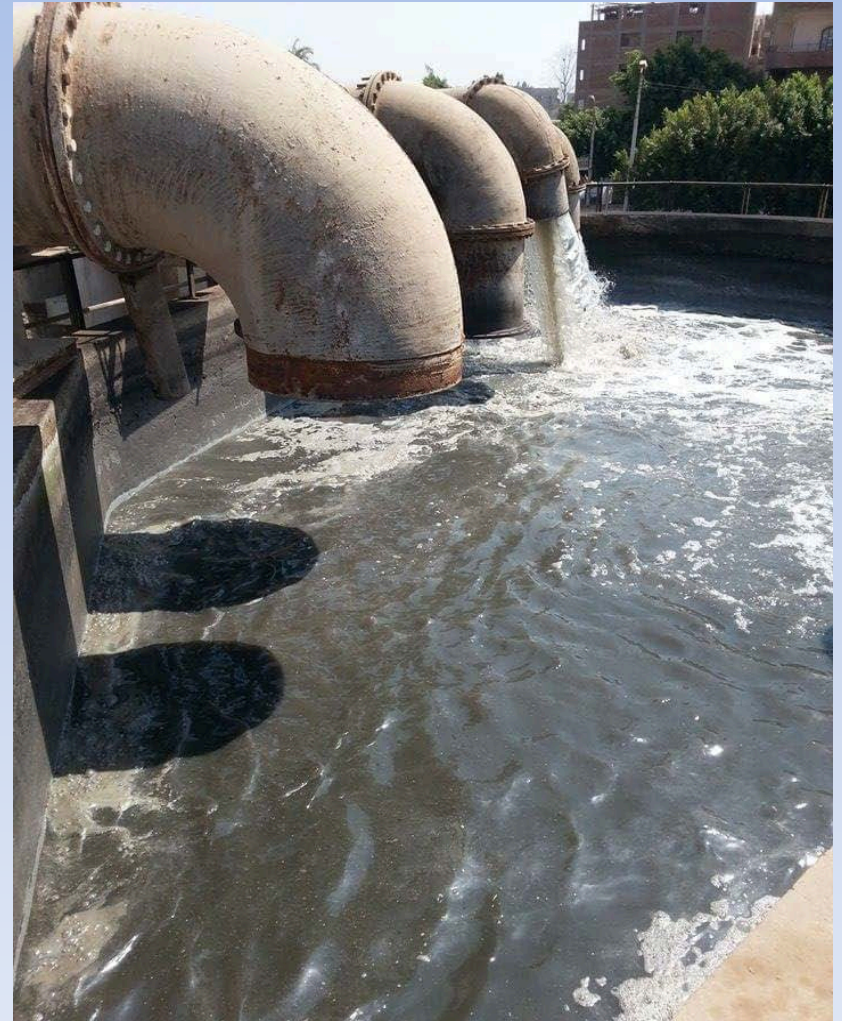


Rotarier
besichtigen
die Baustelle

litfing plants



Qaluib treatment plant for wastewater



oxidation and ventilation baths



drying and sedimentation baths



drying baths

احواض التجفيف





نادى روتارى(مصر الجديدة) / رئيس الدككتورالس يد

.... وبعد طيبة تحية

فى الورد بالميل الالىكترونى المطلوبه اياما الى استفسارات منيادكتم المدعومه من قبل منيادكتم الصرحى5/9/2015 بخصوص مشروعات المياه والصرف . بمركز قليوب بقري ناي واللى وعبدالله باشا والزيتون .

نشرف بان نحيط منيادكتم علم بالياتى .

اولاً :مشروعات مياه الشرب.

نهر النيل بترعة القري بمياه شرب نقيه مأخذا يتم تغذية جميع الشبكات المنفذة لتلك كوم اشرفين المشرح حيث يتم اعمال التنقيه والتطهير الاسماعيلية ويتم ضخها لمحطة مياه بمراحل المحطة كالترويب والترسيب بالمروقات وكذلك الشرح جبر الفلتر الزلطيه وكذلك الشرحيم النهائى بالكلور فى الخزانات ثم يتم ضخها بطلمبات الضخف العالى للشبكات الناقلة لتلك القري.

عن لغسيل الدورى اسبوعيا لتلك الشبكات والخزانات العلويه يقوم افراد الشبكه بالقري با طريق محابس الغسيل وكذلك تحقيمها بالكلور علم بان المعمل المركزي بالفروع يقوم بالمردور وفى حالة انقطاع المياه بالمحطة لاشمام دوريا لأخذ عينات عشوائيه للتأكد من سلامة العينات . يع عمليات مياه شرب نقيه بالمناطق المنقطع عنها المياه عمليات الصيانة يقوم الفروع بتدور .

شانى : مشروعات مد شبكات انحدار الصرف الصرحى.

يتم مد شبكات الانحدار للمناطق المحرومة والسى تحتاج فاعليا خدمة الصرف الصرحى داخل الحيز لمحطة المعالجة لمخطات الرفع التى تقوم بدورها برفع المياه بالانحدار العراني لتستخدم المياه المعالجة فى زراعة وري الغابات الشجرية الغير مشعبه بشركس .

مرفق لسيدكتم صور توضيحية لاجزاء المشروعات وكذلك جراح تطهيرها بالمخطات المختلفة.

وتفضلوا بقبول فائق الاحترام والتقدير.....

6/9/2015حري أ فى ت

...ي عتمد،

فروع مدير عام ال

(محمد عبد الجواد امانى م /)



Dear .dr / amir saba (Rotary club of Heliopolis)

According to your E.mail about asking for water and waste watter projects :

- Will the drains frequently be washed of flushed?

* yes . the drains are washing regularly.

- are the pumps installed in between the system?

* yes . the pumps installed in all the systems.

- are there reservoirs on the way to main pipe line?

* yes . reservoir in all the villages .

- how long is the way from the village to the main pipeline?

*about 3 kilometers .

- what are you doing with the waste ?

* during washig the pipelines the waste back to the pile river or to drains .

- are there any clarification plants?

* yes . kom ashfeen clarification water plant.

- how is the waste used?

* Go to the river.

- when will the project be finished and work for the people?

* the current project will be finished in 10/10/2015.

With great thanksgiving,

With best wishes,

Eng. Amany abd elgawad

- Will the drains frequently be washed or flushed?

*** yes, the drains are washed regularly.**

- are pumps installed in between the system?

*** yes, pumps are installed in all the systems.**

- are there reservoirs on the way to main pipe line?

*** yes, reservoir in all the villages .**

- how long is the way from the village to the main pipeline?

***about 3 kilometers .**

- what are you doing with the waste ?

*** during washig the pipelines the waste back to the Nile river or to drains.**

- are there any clarification plants?

*** yes . kom ashfeen clarification water plant.**

- how is the waste used?

*** Go to the river.**

- when will the project be finished and work for the people?

*** the current project will be finished in 10/10/2015.**

With great thanksgiving

Eng. Amany abd elgawad
emara